



# NDS Labs Workbench update

Craig Willis  
willis8@illinois.edu  
NCSA/NDS

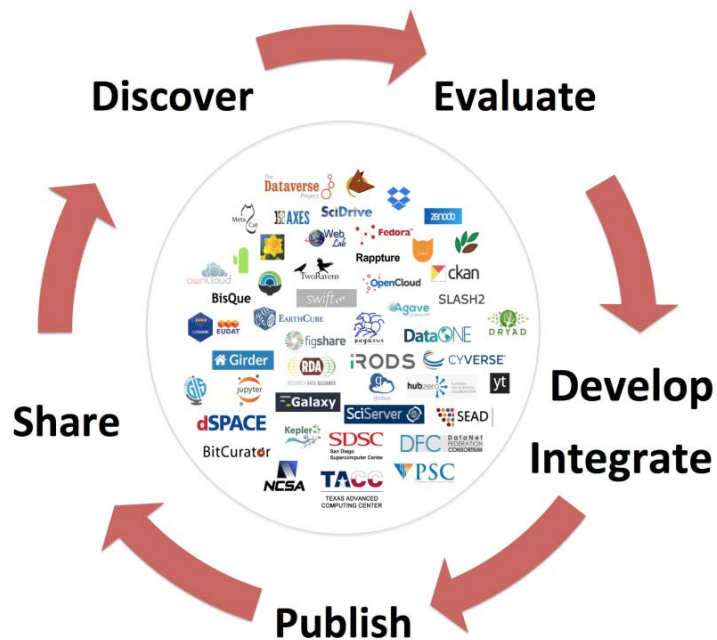
National Data Service Workshop (NDS7)  
April 13, 2017



# NDS Labs Workbench (beta)

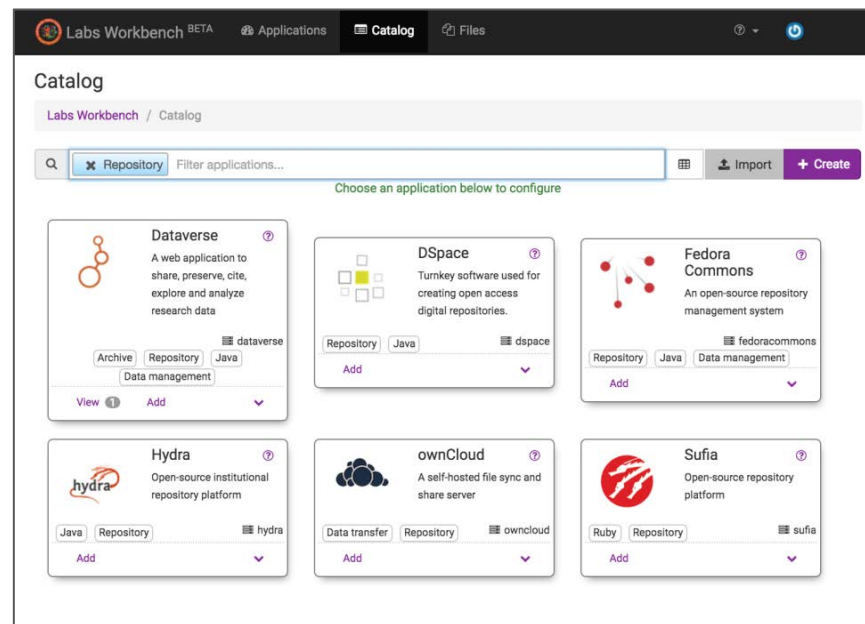
<https://www.workbench.nationaldataservice.org>

- NDSC initiative started in ~January 2016
- Community-driven platform to share, discover, evaluate, develop, and test research data management and analysis tools
- Open platform -- community members recommend and/or contribute tools



# What is Labs Workbench?

- Scalable platform
- Web-based, turn-key system for the deployment of data tools
- Includes catalog of community-contributed tools
- Deploy in seconds
- A personal test environment or sandbox



# Data management training and incubator platform

<https://www.workbench.nationaldataservice.org>

**Incubate data projects:** Use the demonstration instance to explore, develop, and experiment with data management and analysis tools.

**Promote tools:** Add your tools to the catalog for others to discover.

**Experiment:** Instantly deploy turn-key applications into a personal sandbox directly from your browser

## Hosted private or cloud instances

<https://github.com/nds-org/ndslabs>

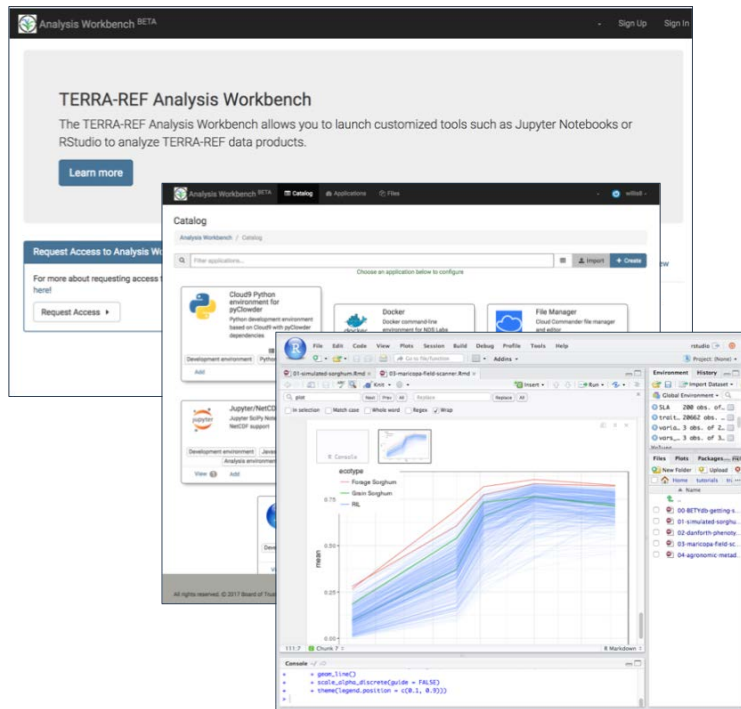
**Become an NDS node:** Install your own instance or host through NDSC.

Provide **scalable, consistent cloud-based environments** for workshops/training.

**In-place analysis:** Allow users to launch custom analysis environments near data.

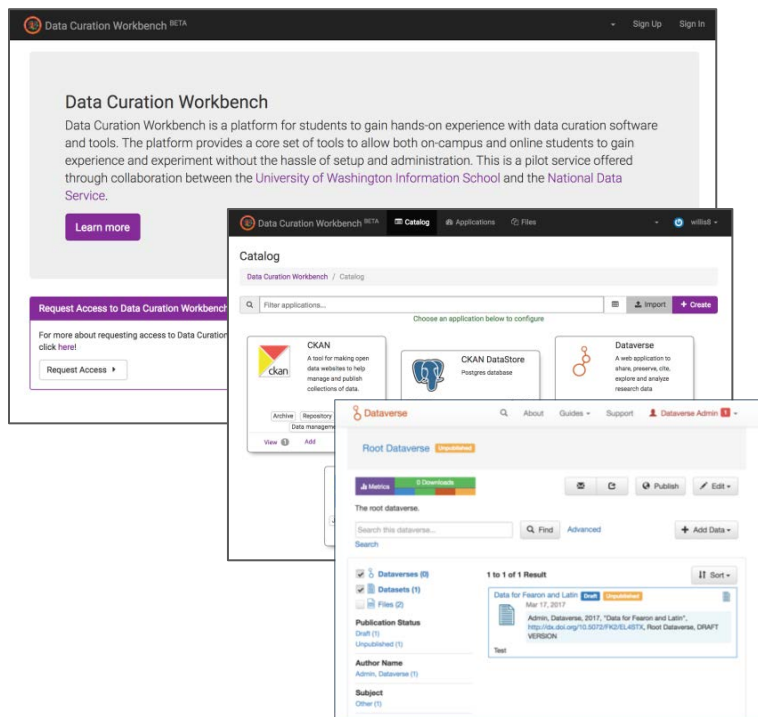
**Customizable** interface and catalog

# Use case: TERRA-REF Analysis Workbench



- Initially used for workshop tutorial to provide consistent environments, scaling to support ~50 participants.
- Customized Labs Workbench instance hosted as part of TERRA-REF infrastructure at NCSA.
- Custom analysis and development environments with direct access to TERRA-REF data. Used by collaborators and alpha users.

# Use case: Data Curation Education Workbench



- NDS pilot project initiated during NDSC6, led by Carole Palmer at the University of Washington iSchool
- Customized instance of Labs Workbench hosted on SDSC Cloud
- Sandbox for students to get hands-on experience with data curation systems and tools including CKAN and Dataverse.

## On the horizon:

- ThinkChicago
  - Potential use as analysis engine in data management systems
    - DataDNS, Cyverse
- Simplified installation (balancing scalability with simplicity)
- Improved courseware integration (iSchool pilot)
- Enable deployment in more environments, including commercial cloud providers



# Contribute and collaborate

- General Q&A (Google group)
  - <https://groups.google.com/forum/#!forum/ndslabs>
  - Ask questions, propose ideas, announce your services
- Code and issues (Github):
  - Fork, create pull requests, report issues
  - <https://github.com/nds-org/ndslabs>
- Developer chat (Gitter)